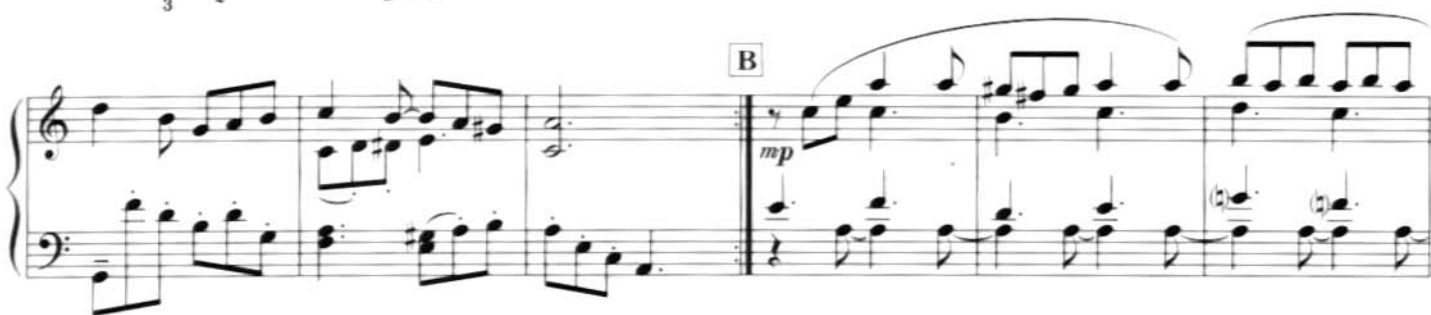


Vamo' alla flamenco

バマリャ フラメンコ

Allegro (♩ = 92)



Composed by NOBUO UEMATSU/Arranged by SHIRO HAMAGUCHI
©2000 Square Sounds Co., Ltd.

C

f *p* *mf*

♩ (D.S. time with repeat)

D

ff

to Φ

1. *mp* 2.

E

mf

Section F: Musical score for piano and violin. The piano part features a series of chords in the left hand and a melodic line in the right hand. The violin part enters with a melodic phrase. Dynamics include *f* and *mp*.

Continuation of Section F: The piano part continues with a steady accompaniment. The violin part has a melodic line with some grace notes. Dynamics include *f* and *mp*.

Section G: **G** *Meno mosso*. The piano part features a series of chords in the left hand and a melodic line in the right hand. The violin part enters with a melodic phrase. Dynamics include *p*.

Continuation of Section G: The piano part continues with a steady accompaniment. The violin part has a melodic line with some grace notes. Dynamics include *p* and *mf*. Tempo markings include *rit.* and *poco a poco accel.*

Continuation of Section G: The piano part continues with a steady accompaniment. The violin part has a melodic line with some grace notes. Dynamics include *p* and *mf*. Tempo markings include *rit.* and *poco a poco accel.*

Section H: **H** *Tempo I*. The piano part features a series of chords in the left hand and a melodic line in the right hand. The violin part enters with a melodic phrase. Dynamics include *mf*. Tempo markings include *rit.* and *a tempo*. The section ends with a Coda symbol and the instruction *D.S.*